



**CHAMPIONS**



## It's a great time to use your child care benefits!

There are perks to being an ATI Physical Therapy employee, including discounted child care at KinderCare Learning Centers and Champions before- and after-school programs! Take advantage and use your Tuition Benefit to save 10% on tuition and get the support you need to thrive at work.

## Four Ways We Give Your Whole Family a Boost

### A Healthy, Safe Environment

Our centers are safe, secure environments for kids to grow and thrive. We've even earned the WELL Health-Safety Rating™ to prove it!

### Convenience and Flexibility

Our centers are conveniently located right in your neighborhood, offering flexible full- and part-time\* scheduling options so you can keep life moving. Peace of mind? Check!

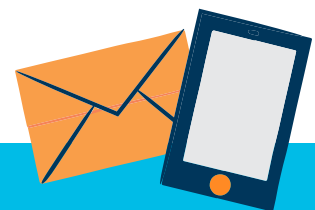
### Expert-Designed Curriculum

Here's what we know about our Early Foundations curriculum: It works. In fact, the longer kids stay with us, the more prepared they are for elementary school.

### Trustworthy Teachers

Our teachers are talented, trained, and top notch—they're the heart of our programs! They support your child every step of the way.

<https://www.kindercare.com/atipt>



**Learn More and Start Saving.**



\*Full- and part-time care options are subject to availability at each location.